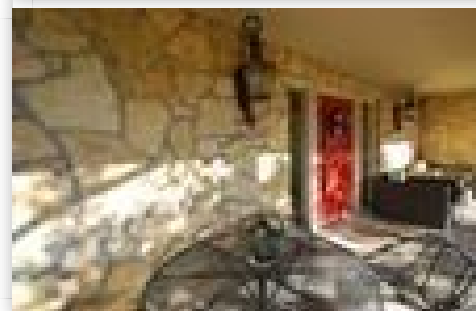
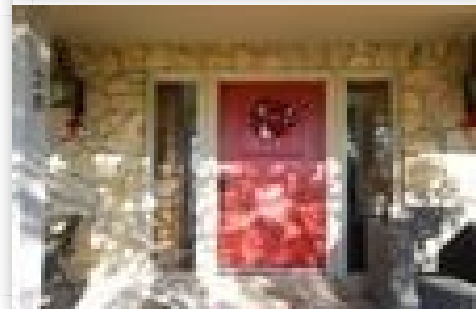


\$240,000

**SPACIOUS HOME ON CRESTVIEW GOLF COURSE
WICHITA, KANSAS
MLS # 15025-18064**



MLS# : 15025-18064

Price : \$240,000

Type : Home in Town

Size : 0.23 Acres

Beds: 3

Baths : 3.50

Year Built : 1973

Address : 25 E Saint Cloud Pl , Wichita , Kansas , 67230

FEATURES

- ✓ CRESTVIEW GOLF COURSE
- ✓ HOT TUB, PRIVATE COURTYARD
- ✓ OVERSIZED 2 CAR GARAGE
- ✓ 3 BEDROOM, 3.5 BATH
- ✓ 2 FIREPLACES
- ✓ WET BAR
- ✓ ANNETTE 316.461.1813

ABOUT THE PROPERTY

Outstanding spacious 3 bedroom 3 1/2 bath patio/garden home on Crestview Country Club Estates Golf Course. This home has vaulted ceilings, 2 fireplaces, hot tub with a private courtyard. The master bath features travertine tile flooring & custom walk-in shower, granite countertops, 2 stone sinks and large closets.

The granite kitchen includes an extra large sink, a large granite island with eating space, trash compactor, included refrigerator, Jenn-Air stove with stainless steel appliances.

Wet bar/wine storage includes a wine refrigerator and custom wrought iron gate. The swimming pool is conveniently just behind the backyard. The oversized two car garage has built in cabinets and project space.

This home has lots of natural light with 7 skylights, a spacious sun-room and a large covered porch. Main floor laundry is possible. Zoned heat & AC, Pella windows and sliding doors.

New roof in 2016. New in 2017: chimney crown, 50 gal water heater, disposal, hot tub pump & cover, MBR toilet.

Neighborhood tennis courts. HOA includes: landscape, pool maintenance, snow, and trash. Andover School district. **THIS HOME HAS AN ASSUMABLE MORTGAGE.** Ask listing agent for details.

CONTACT US

ANNETTE & TAGG OLESON
TAGG TEAM

📞 (316) 461-1813

✉ Team@WichitaTaggTeam.com

🏠 Great Plains Auction & Real Estate

📍 2810 US-50, Emporia, Kansas,
United States, 66801